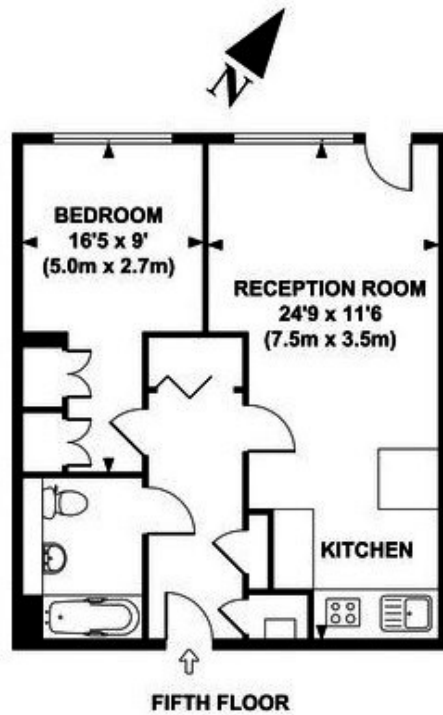




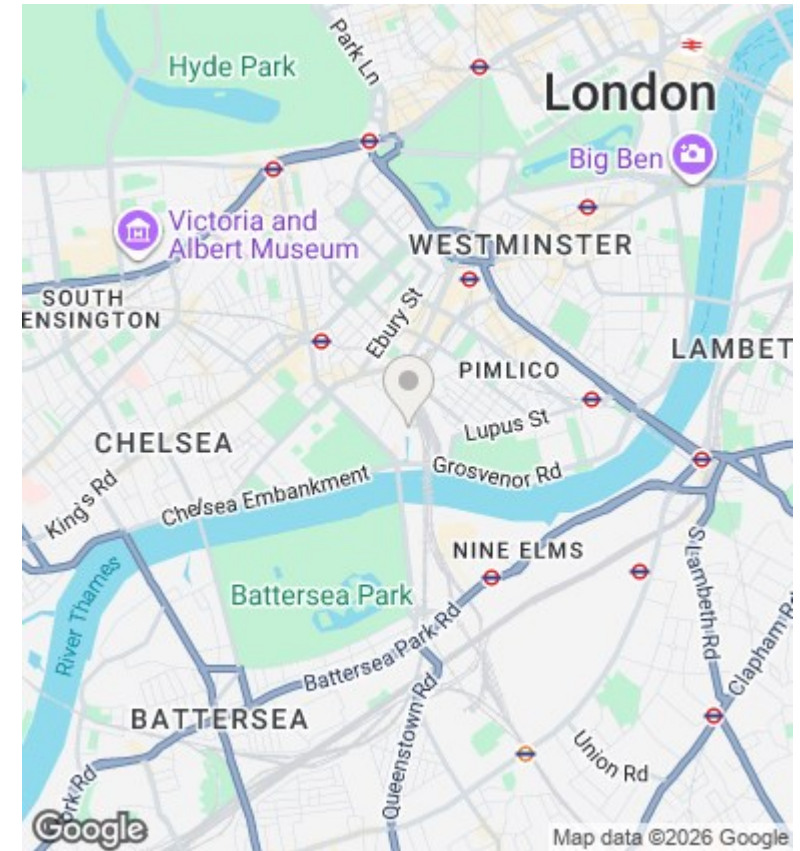
Caro Point, Gatliff Road, Grosvenor Waterside, Sloane Square SW1W 8BD

£635,000

- 24/7 concierge
- walking distance to Sloane Square and Victoria stations
- on site Sainsbury's
- private balcony
- under floor heating
- moments away from Battersea Park
- on site restaurant
- gym and spa
- laundry service
- panoramic views of London



APPROX. GROSS INTERNAL FLOOR AREA 511 SQ FT / 48 SQ M



Viewings

Viewings by arrangement only.
Call 02077225022 to make an appointment.

Council Tax Band

F

EPC Rating:

B

Energy Efficiency Rating		
	Current	Potential
Very energy efficient - lower running costs		
(92 plus) A		
(81-91) B	81	83
(69-80) C		
(55-68) D		
(39-54) E		
(21-38) F		
(1-20) G		
Not energy efficient - higher running costs		
England & Wales	EU Directive 2002/91/EC	